

Chapter 21 NetViewer Software

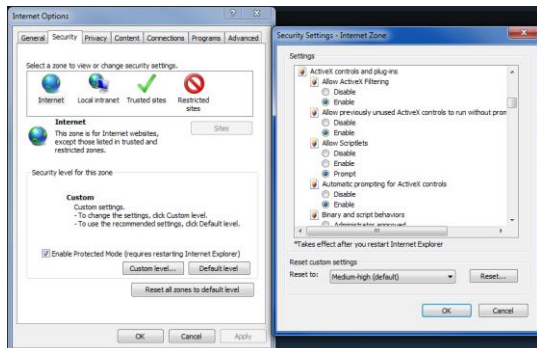


Use this software to access your DVR remotely over the Internet or within your local area network. Ensure that you have completed Chapter 18 Remote Access of this manual before trying to access the DVR using this software.

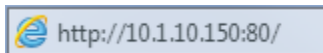
This software can be downloaded from www.NightOwlSP.com or from the installation CD that came included with your DVR system. This software is also used when accessing the DVR through an Internet browser.

If using the Internet, you will have to configure the ActiveX Controls. Follow the below steps for configuration.

1. Open an internet browser.
2. Go to Tools and select Internet Options.
3. Go to the Security Tab.
4. Select the Custom Level button.
5. Scroll down until you see ActiveX controls and plug-ins.
6. Set every setting to either Enable or Prompt.



7. Now type in <http://youripaddress:webport> to access your DVR through the Internet browser.





NetViewer Login

The screenshot shows a 'User Login' dialog box with the following fields and controls:

- IP Address:** A dropdown menu with '10.1.10.100' selected.
- Media Port:** A text input field containing '9000'.
- User Name:** An empty text input field.
- Password:** An empty text input field.
- Network:** A dropdown menu with 'Internet' selected.
- Open All Channels:** A checked checkbox.
- Login:** A button.
- Reset:** A button.

- **IP Address:** Using the software on the same network as the DVR, you will enter the internal IP Address that you assigned to the DVR in the Chapter 18 Remote Access. Using the software remotely, you will enter the public IP address.
- **Media Port:** This will need to be set to 9000.
- **User Name:** Type in the user name that you created in the Password menu of the DVR.
- **Password:** Enter the password that was assigned to the User.
- **Network:** This indicates if you are using same network (LAN) or external networks (Internet).
- **Login:** Select this to Login to the DVR.
- **Reset:** Select this to reset all information.
- **Open all Channels:** This will open viewing on all DVR channels.

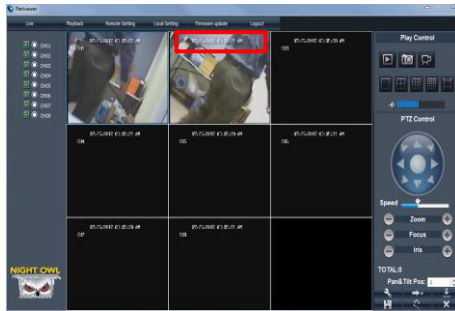
Chapter 21 NetViewer Software



NetViewer Interface

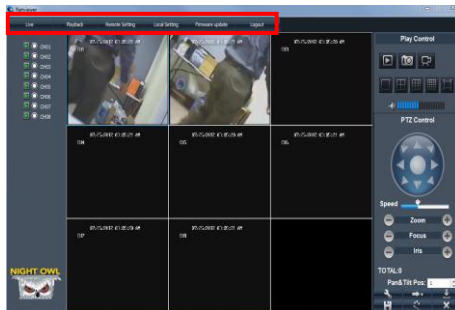
Channel Information

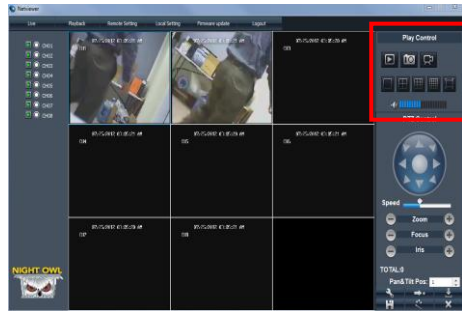
The channel names, date and time will be indicated on every channel in real time.








Menu Bar

This will allow you access to the Live Viewing, Playback screen, Remote Setting, Local Setting, Firmware Update and Log Out of the software.





Play Control

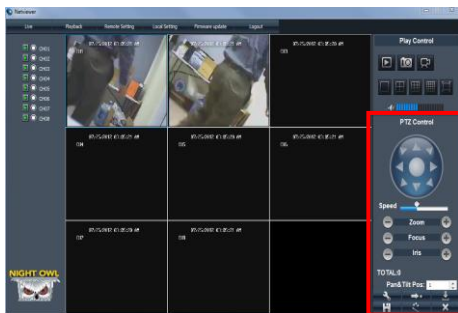
-  This will stop and play the live video feed.
-  This will take a snapshot of the video.
-  This will start and stop recording on all channels.
-  This will show the different viewing options.
-  This will adjust the volume of any audio-enabled channels.







Chapter 21 NetViewer Software



PTZ Control

These control settings can only be used for cameras that have the Pan, Tilt, and Zoom features. A PTZ camera is not included.



- Arrows: These will move the camera manually in the direction of the arrow.
- Zoom: The + and – zooms the camera in and out.
- Focus: The + and – focuses the camera to have a clear image.
- Iris: The + and – allow you to adjust the type of lens of the camera to get the best picture in different lighting conditions.
- Speed: This changes the speed of the camera when rotating.
- Pan&Tilt Pos: This is the position that the camera is at before it moves during the rotation.
-  Set PTZ preset positions.
-  Go to the selected preset spot.
-  Load a previous setting you have configured.
-  Save the current preset settings.
-  Start PTZ cruise.
-  Stop PTZ cruise.

Chapter 21 NetViewer Software



Playback

This screen will allow you to search, playback, and backup recorded videos.

To access this menu select the Playback button from the Menu Bar.

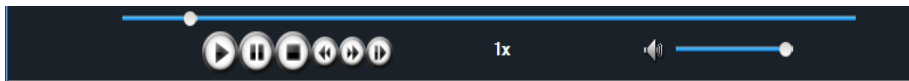









- Calendar (Upper right corner): This will show the days with recordings in bold numbers, select a date to view a file list.
- Refresh: This will refresh the file list when a day has been selected.
- All Channel Drop-Down Menu: This will allow you to sort the file list by a certain channel.
- All Type Drop-Down Menu: This will allow you to sort the file list by a certain type of recording such as alarm (motion detection) and common (continuous).
- Search: This will search the file list for the indicated channel and recording type.
- File List: This will list all recordings for the selected day. Recordings will be listed by time with the channel number and size of the file.
- Download: This will download the selected file to the current computer.
- Play: This will play the selected file.



Playback

Use the bottom control panel for various video controls.



- The circle indicator on the bottom bar will show the current location of the video during playback.
-  This button will allow you to play the video.
-  This button will pause the video.
-  This button will stop the video.
-  This button will speed up the video.
-  This button will slow down the video.
-  This button will show each frame during playback.
-  This will adjust the volume on channels with audio.

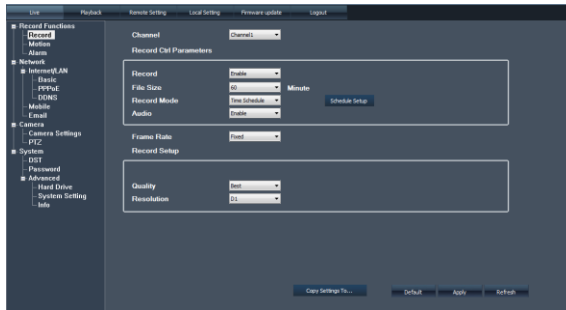
Chapter 21 NetViewer Software



Remote Setting

This screen will allow you to access all of the DVR setting menus. The menus will include the Record, Network, Camera, and System Menus.

To access this menu select the Remote Setting button from the Menu Bar.



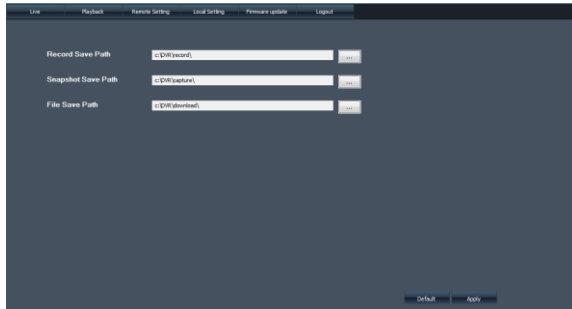
- **Record Menu:** This will allow you to make changes to the record, motion and alarm settings. Refer to Chapter 13 for details.
- **Network Menu:** This will allow you to configure Internet, DDNS, email and mobile settings. Refer to Chapter 17 for details.
- **Camera Menu:** This will allow you to configure the camera and PTZ settings. Refer to Chapter 16 for details.
- **System Menu:** This will allow you to configure the DST, password, advanced, hard drive, system settings and the info menus. Refer to Chapter 12 for details.



Local Setting

This screen will allow you to choose where recordings, snapshots, and file downloads are saved on the remote computer.

To access this menu select the Local Setting button from the Menu Bar.



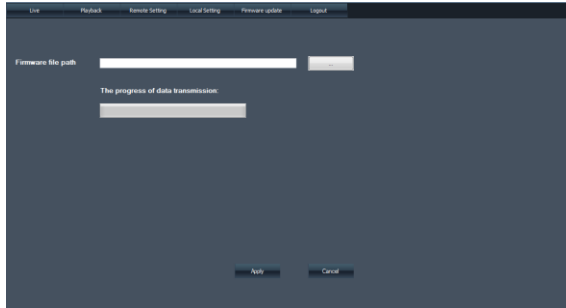
- Record Save Path: This will indicate the location on the computer that the recordings will be saved.
- Snapshot Save Path: This will indicate the location on the computer that the snapshots will be saved.
- File Save Path: This will indicate the location on the computer that the downloads will be saved.



Firmware Update

This screen will allow you to perform a firmware update to the DVR remotely.

To access this menu select Firmware Update from the Menu Bar.



- Firmware File Path: This will allow you to choose the firmware file that was saved to the computer that will be uploaded.
- The Progress of Data Transmission: This will show you how long the update will take.